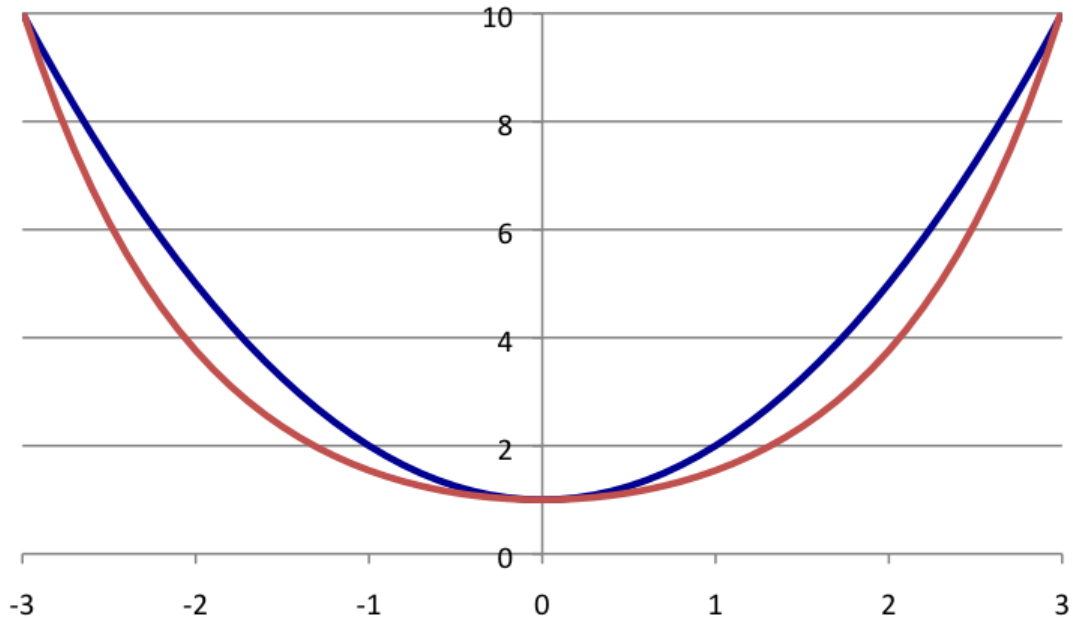


## COMPARING PARABOLAS AND CATENARIES

In the illustration below, the blue curve is a parabola and the red curve is a catenary. Note that these curves meet at two points, one on each side of the  $y$  – axis. Near the bottom point the catenary grows more slowly than the parabola, but past the intersection points the catenary begins increasing far more rapidly than the parabola.



(Source: <http://mathyear2013.blogspot.co.uk/2013/07/the-catenary-and-parabola.html>)