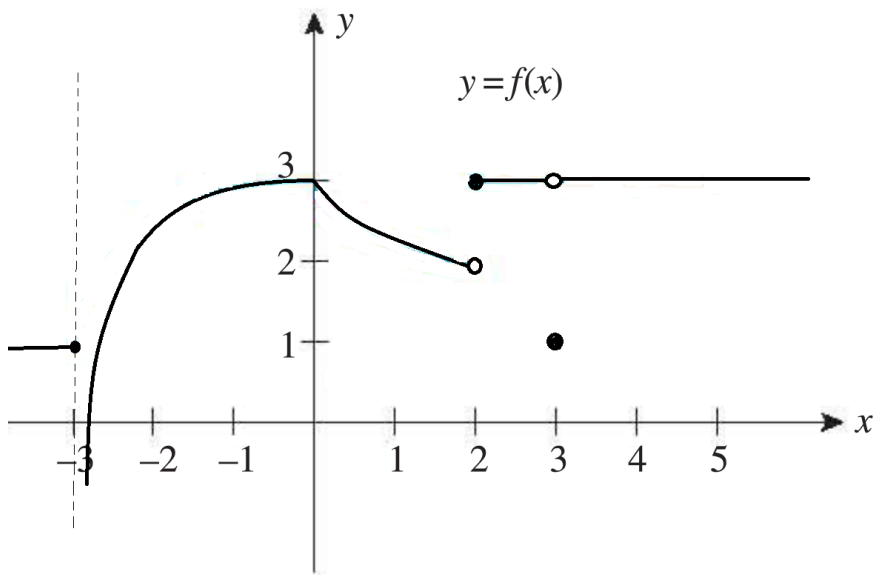


Name: _____

Consider the graph of a function f shown below. Evaluate the limits below. If the limit does not exist, **explain why** and write DNE.



a) $\lim_{x \rightarrow 2^-} f(x)$

Answer: 2

b) $\lim_{x \rightarrow 2^+} f(x)$

Answer: 3

c) $\lim_{x \rightarrow 2} f(x)$

Answer: DNE

d) $\lim_{x \rightarrow 3^-} f(x)$

Answer: 3

e) $\lim_{x \rightarrow 3^+} f(x)$

Answer: 3

f) $\lim_{x \rightarrow 3} f(x)$

Answer: 3

g) $\lim_{x \rightarrow -3^-} f(x)$

Answer: 1

h) $\lim_{x \rightarrow -3^+} f(x)$

Answer: $-\infty$

i) $\lim_{x \rightarrow -3} f(x)$

Answer: DNE